



# Graphing With Excel

---



# ROC Curve Graph

---

	Diagonal		My Data	
	FA	HIT	FA	Hit
	0	0	0.04	0.24
	1	1	0.3	0.69
			0.65	0.92

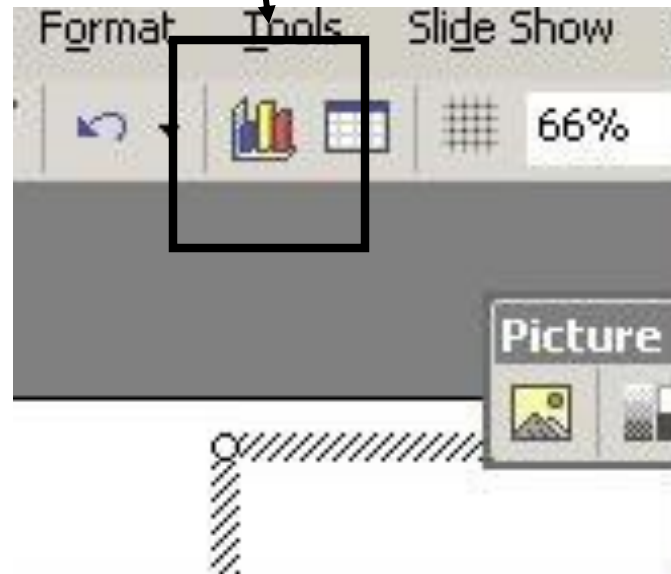


# Select Data for Diagonal

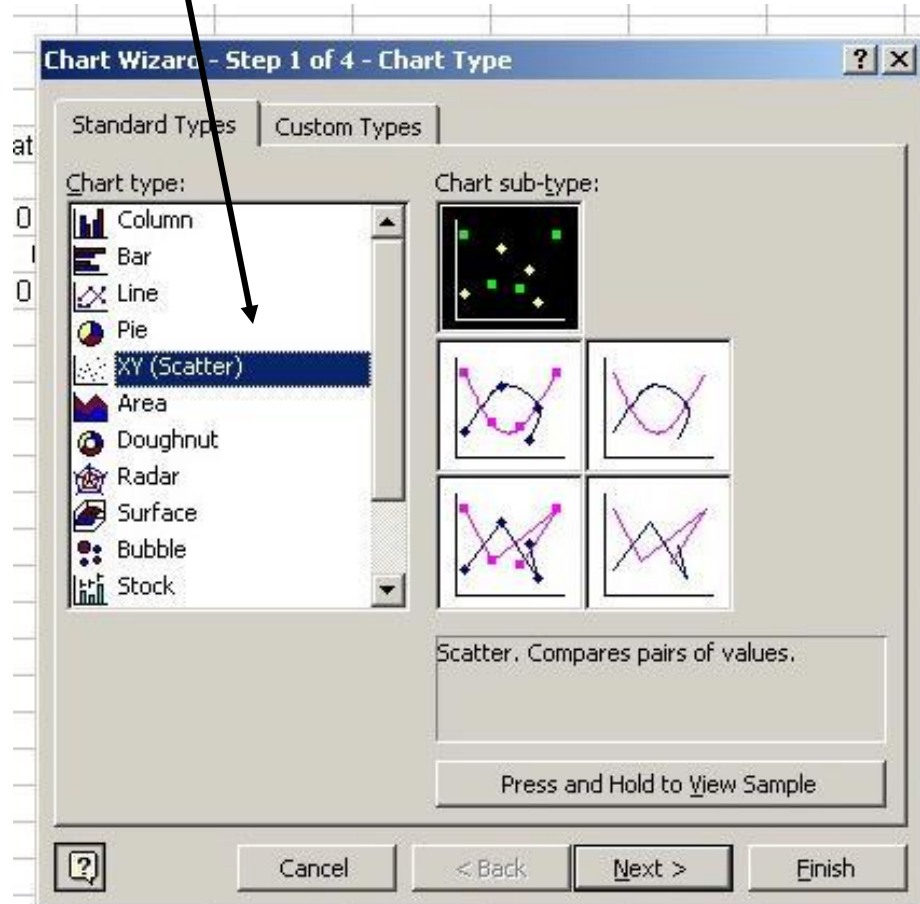
---

	Diagonal		My Data	
	FA	HIT	FA	Hit
	0	0	0.04	0.24
	1	1	0.3	0.69
			0.65	0.92

# Graphing Wizard

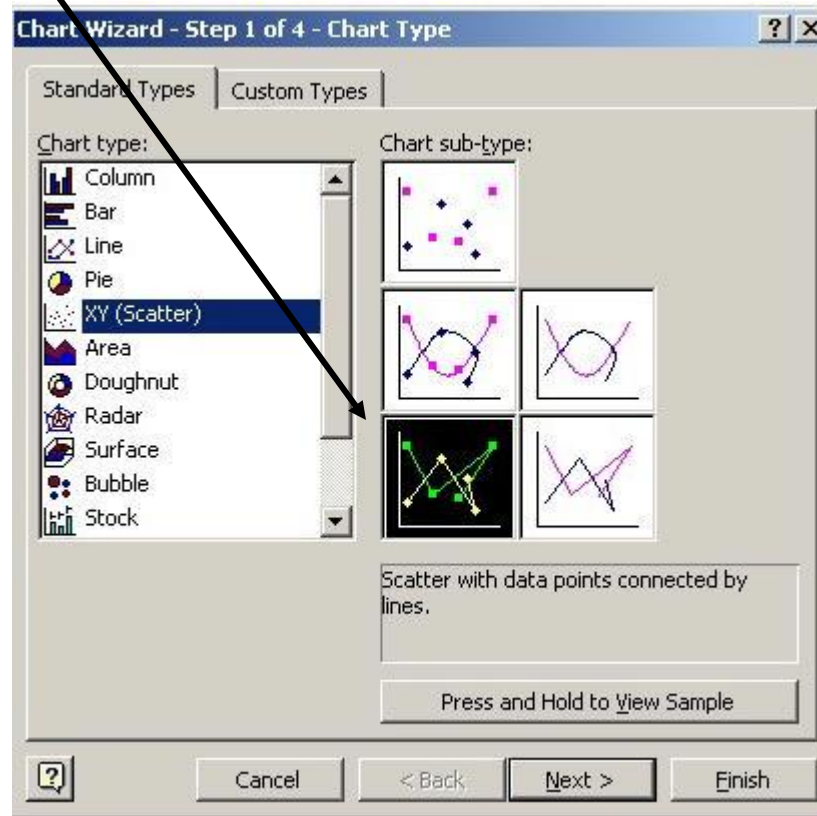


# XY (Scatter)

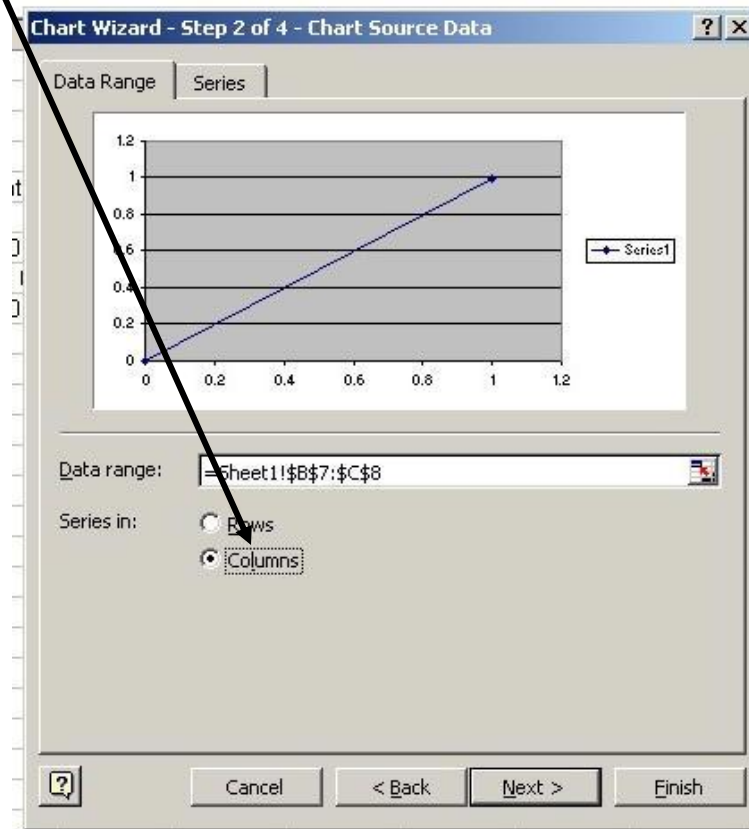


# Use Straight Line Connectors

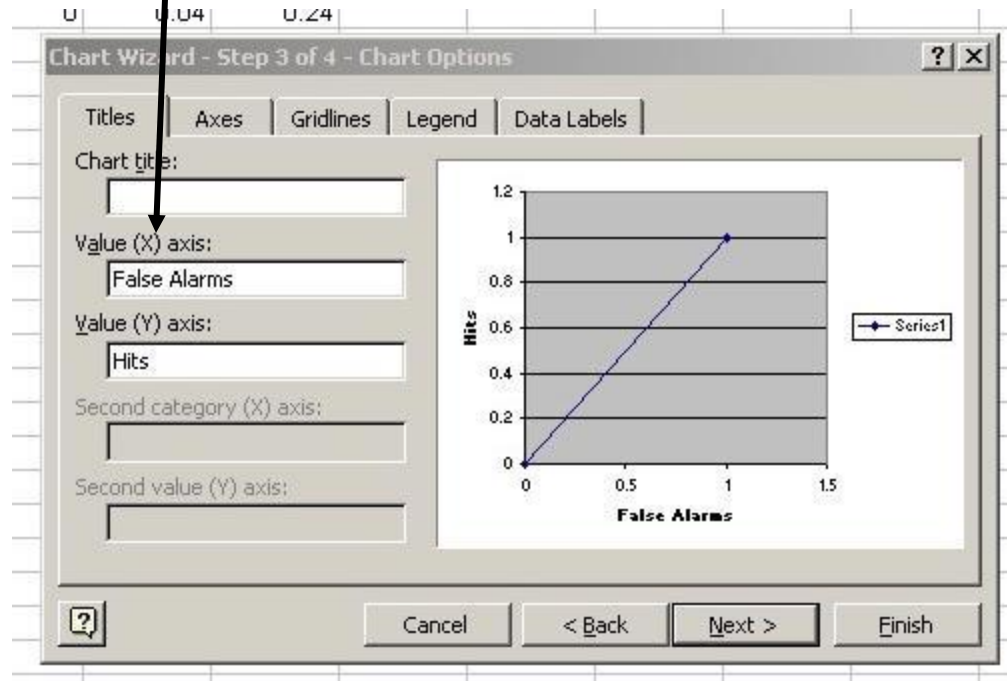
Also use symbols for points. This is the only data that we know.



# Data is in Columns

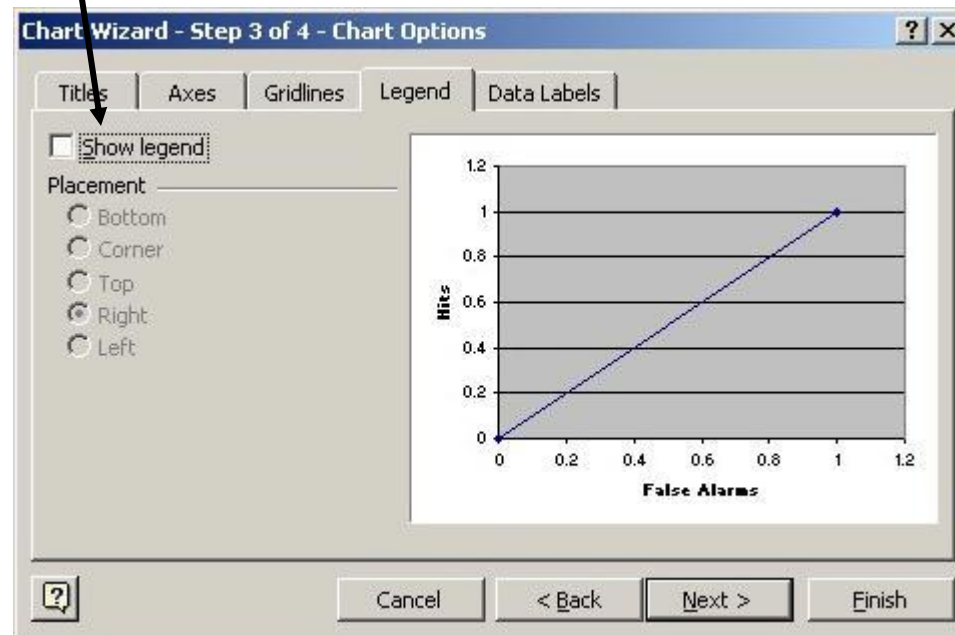


# Label Your Axes

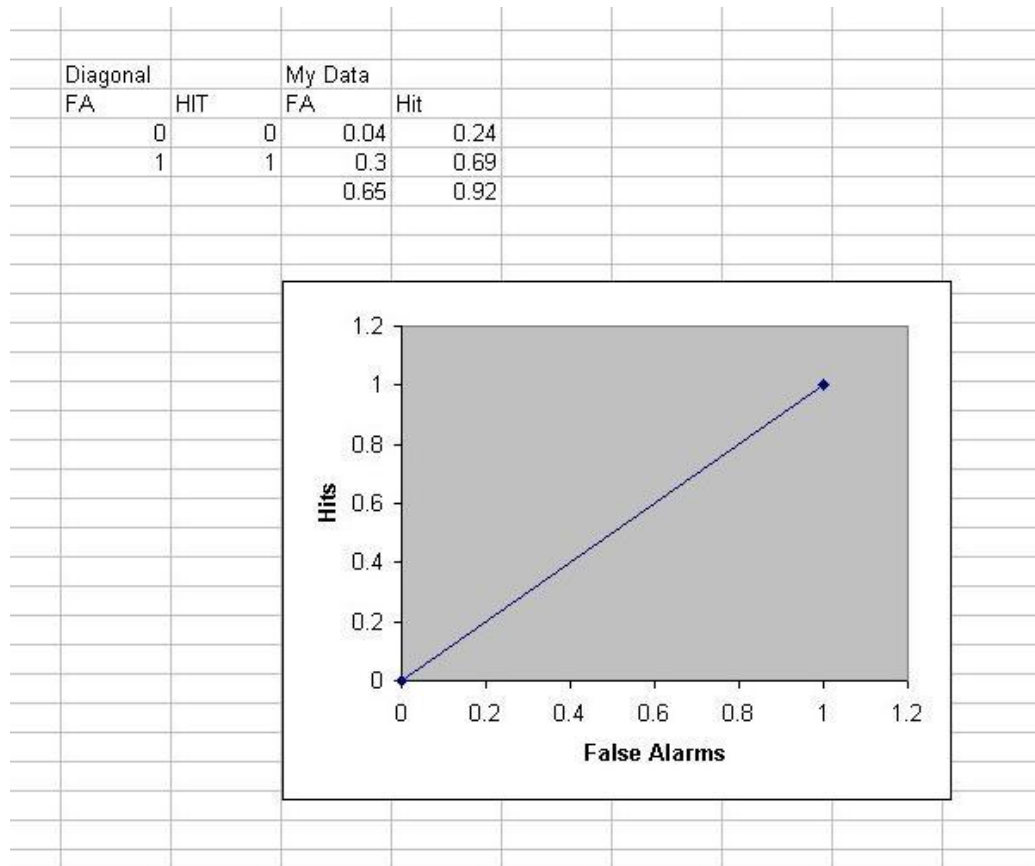




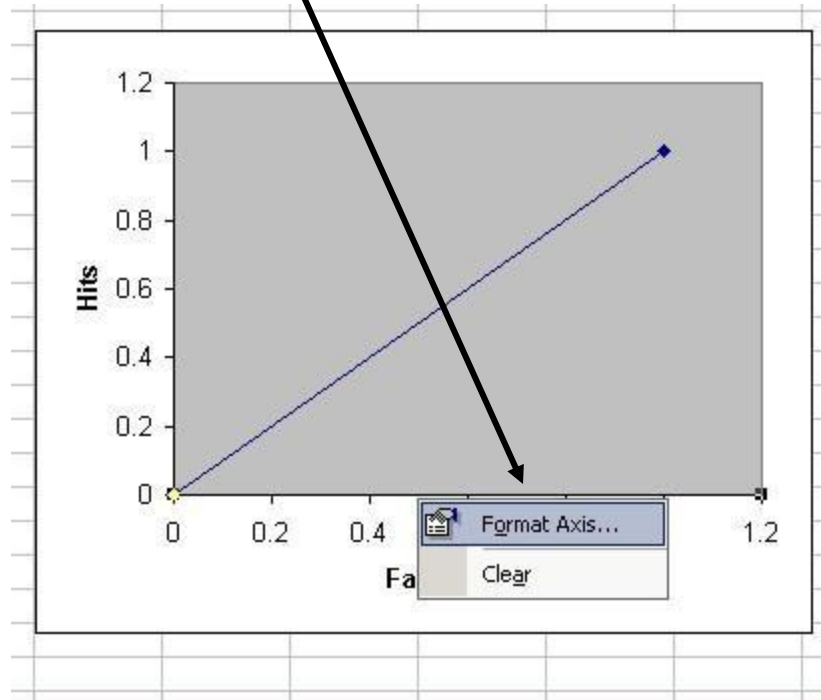
# Remove Legend. Why?



# This is what you have now

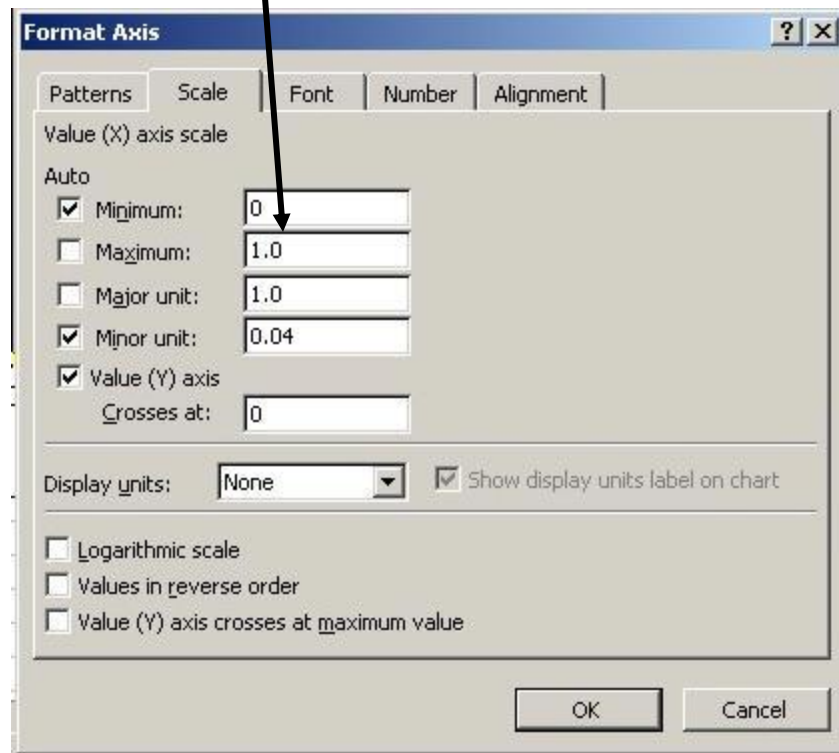


# Set the Axes Scales

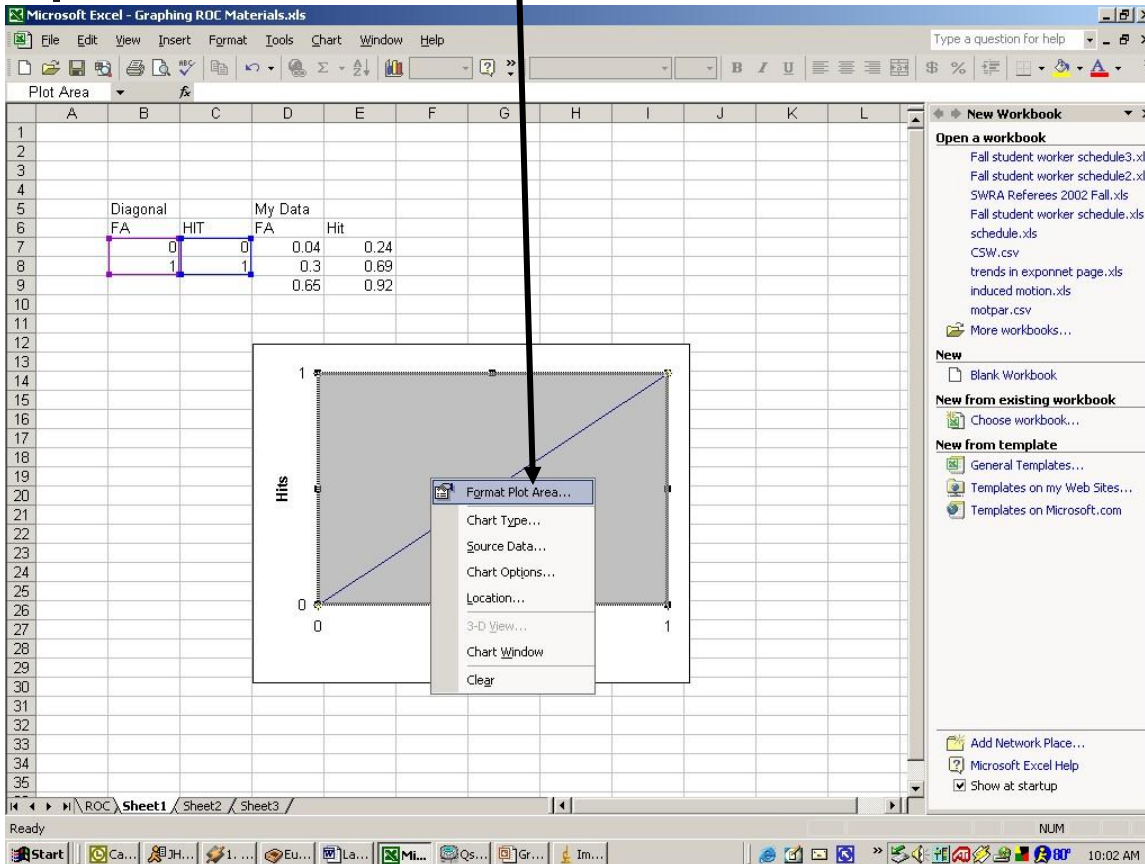


Place mouse over one of the axes and right click. Repeat with other axis.

# Set Max and Major Unit to 1.0

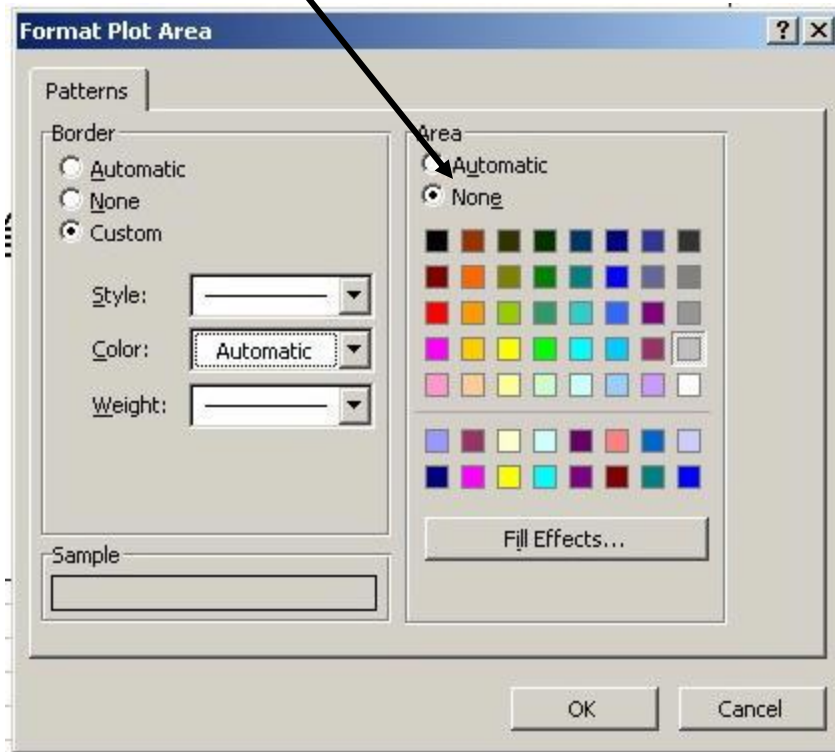


# Clear the background

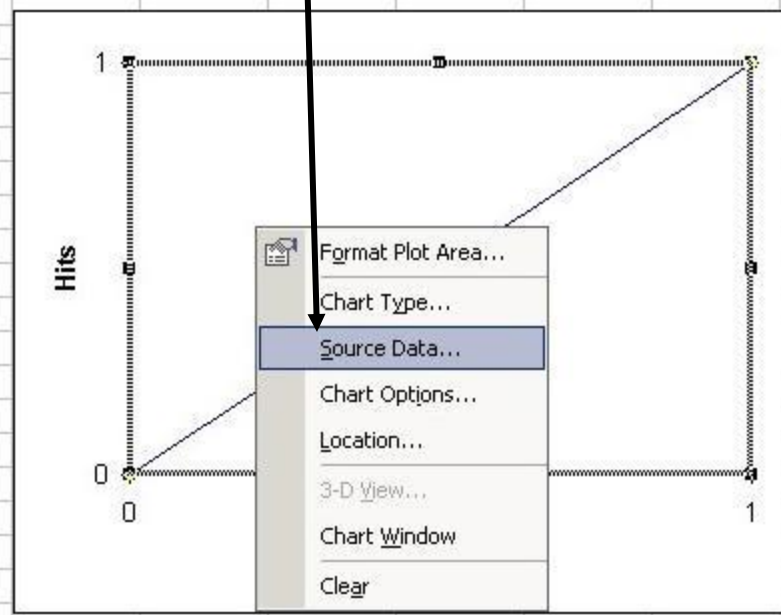


Place mouse over one of the background of the graph and right click.

# Set Area to None

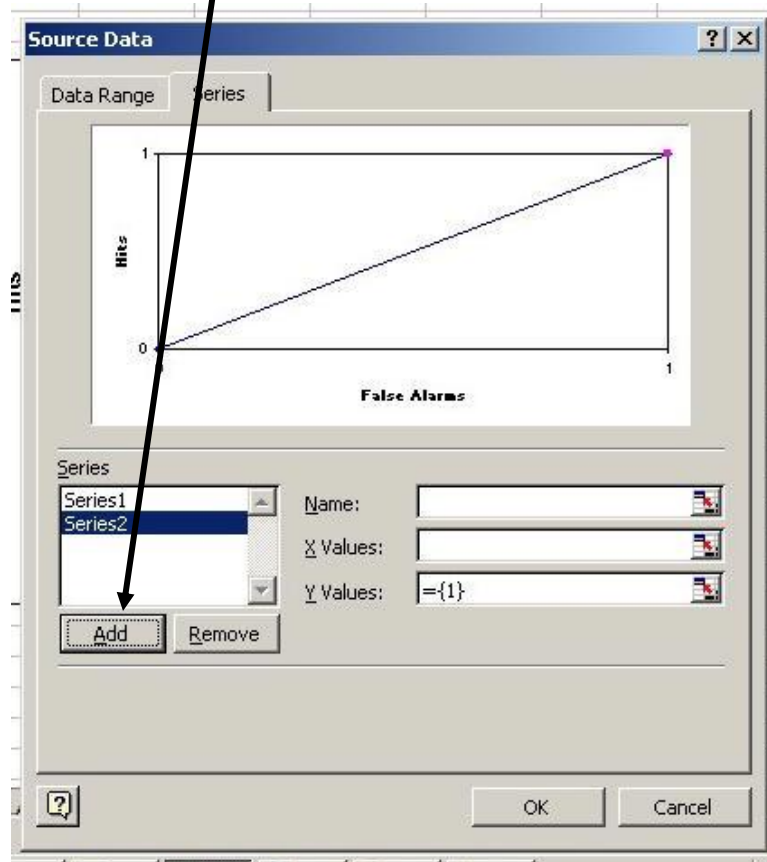


# Add Your Data



Place mouse over one of the background of the graph and right click. Select Source Data.

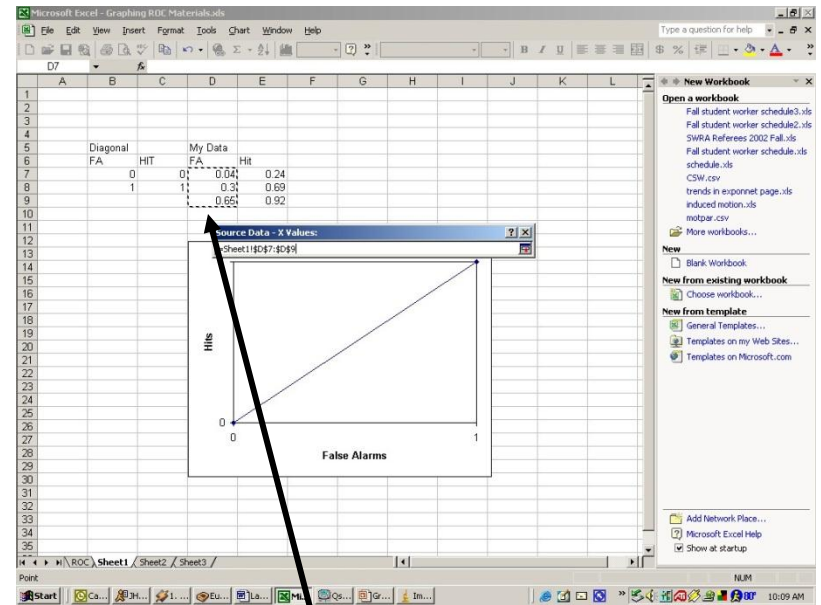
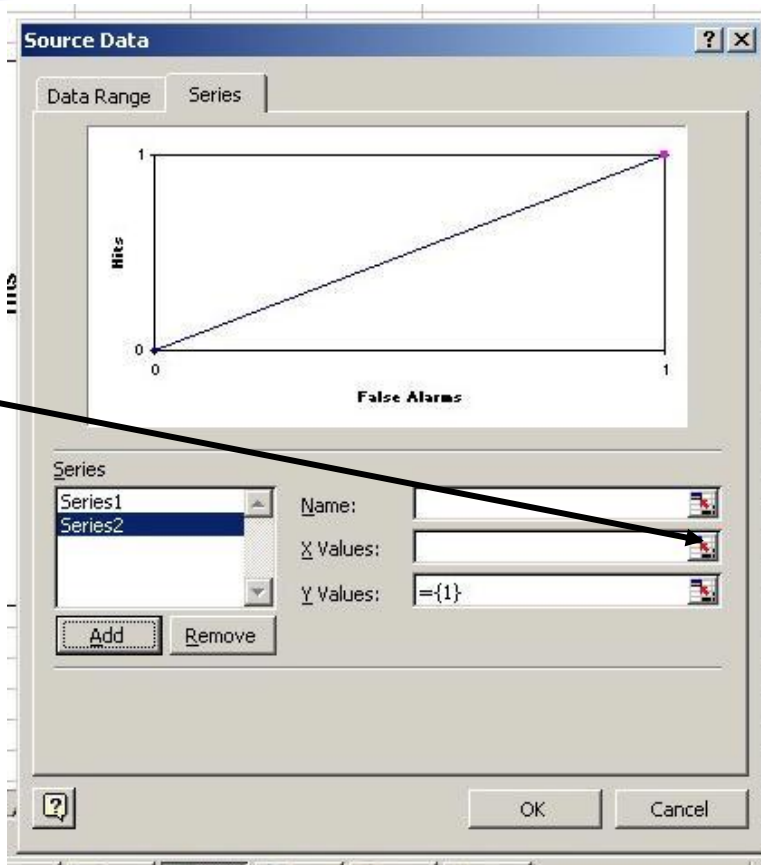
# Add New Series





# Add X (False Alarm) Values

Click on this symbol



Select Your False Alarm values from the spreadsheet. Then press enter. Repeat for Hits as the Y axis values.

# Graph With One Curve

Repeat to add second ROC curve to graph.

